

# Cheshire West & Chester Council Senior Officer Structure

- Reports directly to Simon Riley
- Reports directly to Helen Brackenbury
- Reports directly to Charlie Seward



**Delyth Curtis**

Chief Executive and NHS Cheshire & Merseyside Place Director



**Helen Brackenbury**

Acting Deputy Chief Executive (Health and Wellbeing)



**Charlie Seward**

Deputy Chief Executive (Communities, Environment and Economy)



**Simon Riley**

Chief Operating Officer

## Finance



**Debbie Hall**  
Director ●

**Jude Green**  
Transactional Services

**Anna Jones**  
Financial Management

**Paul Jackson**  
Capital and Strategic Finance

**Steve Wilcock** ●  
Cheshire Pension Fund

**Debra Goodall**  
Health & Wellbeing Finance

## Governance



**Vanessa Whiting**  
Director ●

**Anne Greenwood**  
Legal Services

**Stewart McKie**  
Companies, Compliance and Assurance

**Penny Housley**  
Democratic Services

## Environment and Communities



**Maria Byrne**  
Director ●

**Mark Brazil**  
Environmental Services

**Rachel Foster**  
Communities, Culture and Libraries

**Vanessa Griffiths**  
Public Protection

**Graham Lister** ●  
Culture Advisor

## Economy and Housing



**Gemma Davies**  
Director ●

**Alison Amesbury**  
Housing

**Rob Charnley**  
Planning

**Hayley Owen**  
Economic Growth

**Paul Nolan**  
Mersey Forest

**Will Pearson**  
Climate Emergency Response

## Transport and Highways



**Rose McArthur**  
Director ●

**Jayne Black**  
Highways

**David Land**  
Strategic Transport



Cheshire and Merseyside

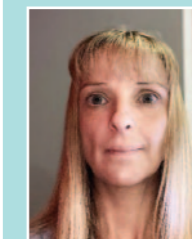
(Cheshire West Place Team)



**Alex Mitchell** ●  
Finance & Performance



**Paula Wedd** ●  
Quality, Safety & Improvement



**Laura Marsh** ●  
Transformation & Partnership



**Andy McAlavey** ●  
Clinical Director – Place

## Public Service Reform



**Laurence Ainsworth**  
Director ●

**Elena Lloyd**  
Communications and Engagement

**Vacant**  
Digital, Data and Technology

**Bev Wilson**  
Insight and Intelligence

**Liz Chadwick** ●  
Human Resources and Organisational Development

## Adult Social Care and Health



**Charlotte Walton**  
Director ●

**Vacant**  
Adult Social Care Operations

**Matthew Emerson**  
Commissioning, Contracts and Quality Assurance

**Gavin Butler**  
Principal Social Worker

## Children and Families



**Gemma Gerrish**  
Acting Director ●

**Philippa Rees**  
Children's Social Care

**Zara Woodcock**  
Early Help and Prevention

**Debbie Edwards**  
Education and Inclusion

**Louise Irving**  
Principal Social Worker

## Public Health



**Helen Bromley**  
Director ●

**Vacant**  
Consultant in Public Health

**Donald Read**  
Consultant in Public Health

**Paul Hickson**  
Senior Manager, Health and Wellbeing

## Vivo Care Choices



**Alistair Jeffs**  
Director ●

**Janice Fryer**  
Vivo Provider Services

## Commercial Management and Delivery



**Graham Pink**  
Director ●

**Claire Darbyshire-Came**  
Commercial Management (acting)

**Siobhan Bird**  
Capital Projects

**Tim Dodd**  
Property

## Our Partner Companies



**Avenue Services**  
**Paul Knight**  
Head of Avenue Services



**Brio Leisure**  
**Matt Parker**  
Managing Director



**Cheshire West Recycling**  
**Andy Edwards**  
Managing Director



**Edsential**  
**Ian McGrady**  
Managing Director



**Qwest services**  
**Ben Cummins**  
Managing Director



**871**  
**Philip Cox**  
Chief Executive